

PALOMA®
HIGH QUALITY SANITARY HARDWARE



EXCELLENT
ATLANTA
SERIES





www.palomahardware.com

ADVANCED MANUFACTURING TECHNOLOGY

Our quality is not only due to its excellent functional design, but also from advanced manufacturing techniques. The application of fully automatic intelligent manufacturing enhances quality further, improves accuracy and stability of products, bringing ongoing product reliability and great user experience.



Italian IMR gravity casting to produce fine faucet bodies in whole piece with smooth inner surface and high density of brass.



Automatic CNC machining centers to ensure high precision of inner structure.



80% of the machining procedure done at one setting due to efficient computerized programming and large capacity of the tool magazine.



Automatic robotic polishing to guarantee a perfect finish on every product.



Automatic plating lines to ensure the stability of the highest quality product finishes that can never be achieved using manual methods.

ATLANTA

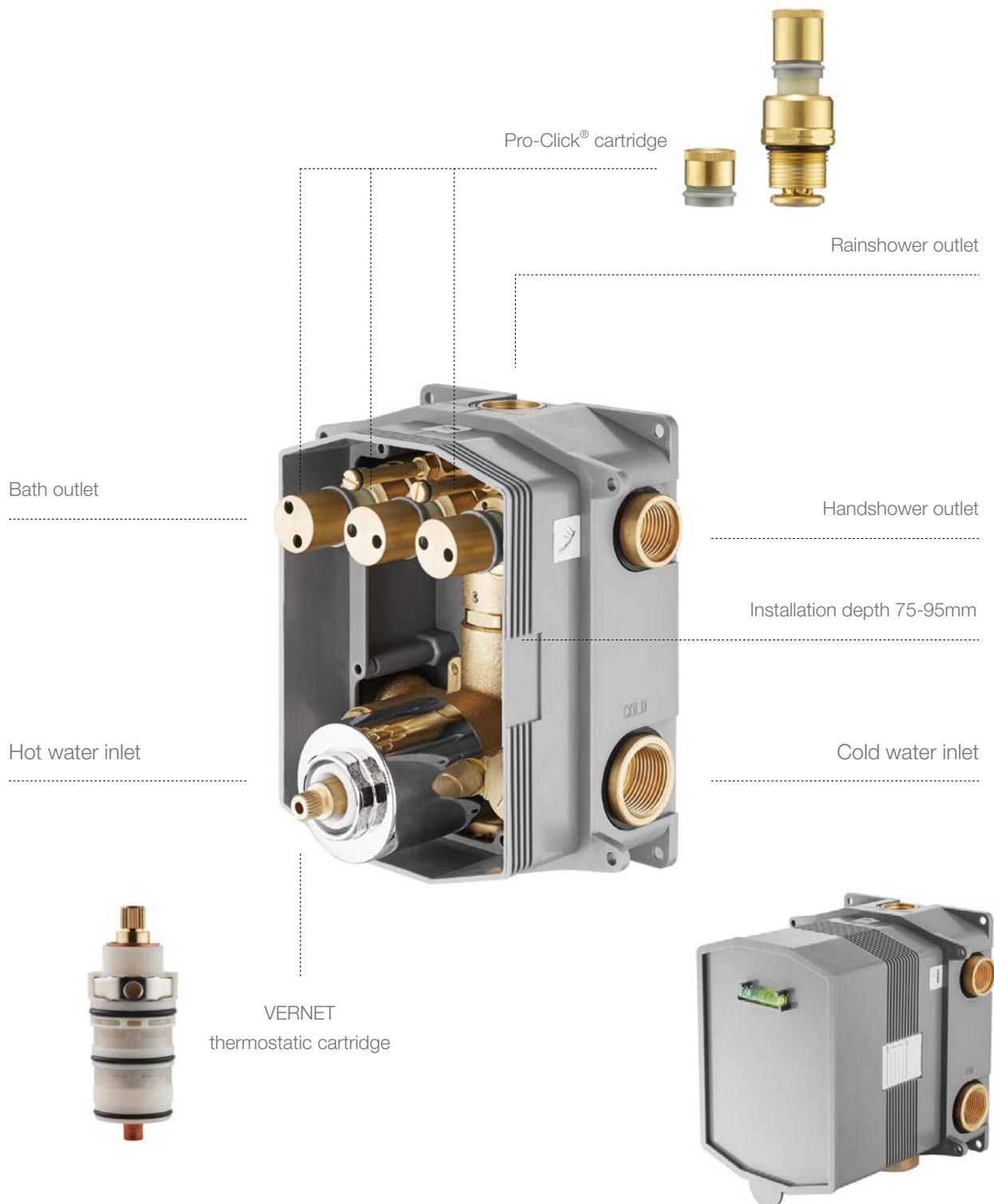
Series



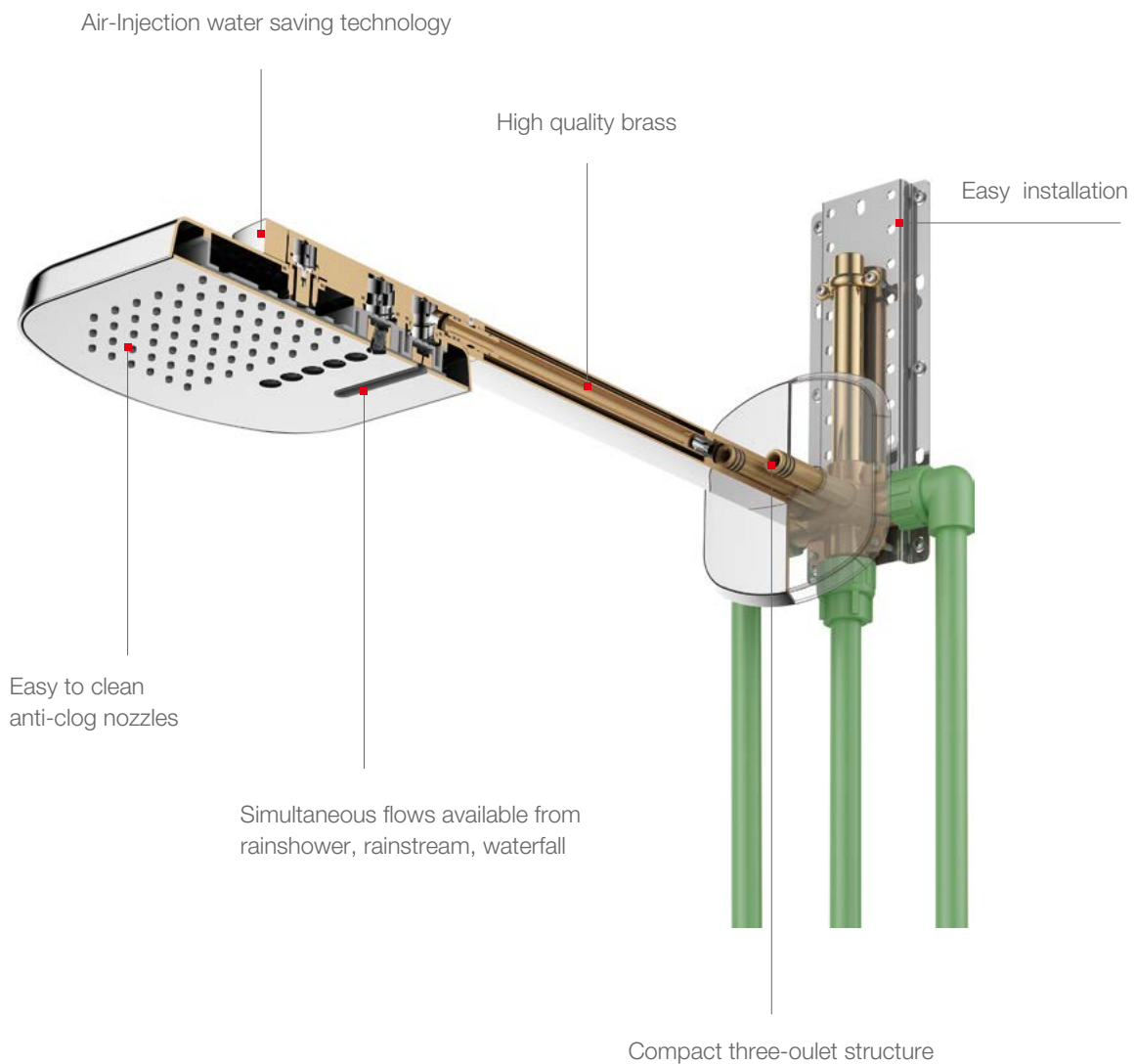
PRO-CLICK® TECHNOLOGY

CLICK AND ENJOY

By the smart mechanic motion of Pro-Click®, just one click and enjoy the shower. Each water flow is controlled independently. The 45mm high-flow cartridge can deliver various water flows simultaneously, thus a spa is on.



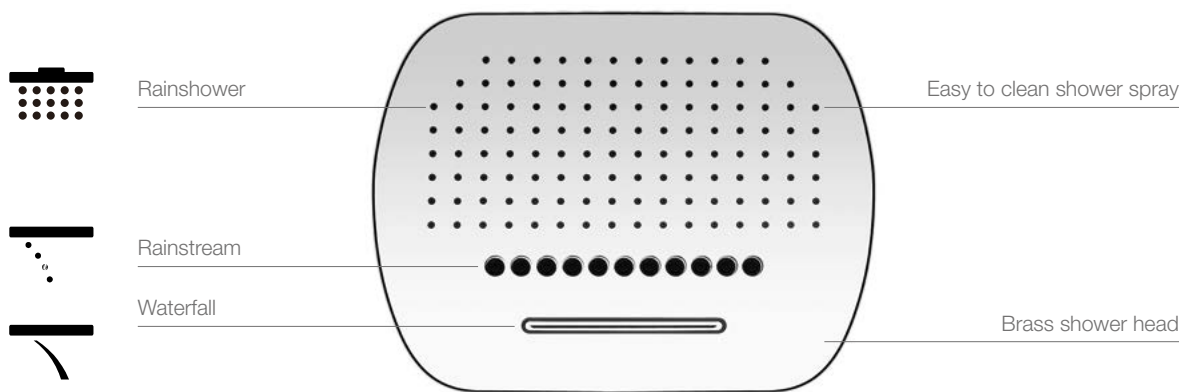
SENSATIONAL EXPERIENCE IN ALL DIMENSIONS



PRO-CLICK® SHOWER SYSTEM

ENJOY SHOWER THROUGH MULTIPLE WAYS

Whether you like a through Air-Injection shower, a brand new rainstream massage, or a natural waterfall, all can be easily achieved through the Pro-Click® push button. Moreover, three outlets can be operated simultaneously.



Waterfall

Plentiful water flows off weariness after a long day. Widened outlet offers a natural shower experience.



Rainstream

Brand new rainstream is powered by German water-saving aerator technology. It has eleven outlets skin to rain drops falling from tile roof.



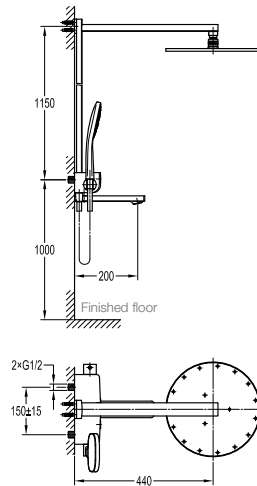
Rainshower

The design of rainshower outlet fully helps saving water, without reducing any comfort of shower, achieving an efficient water usage.





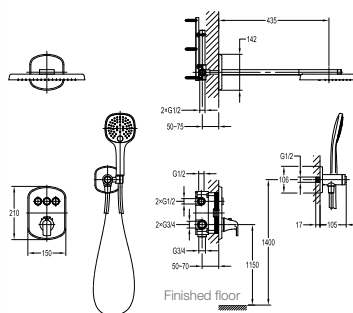
The thermostatic Pro-Click® shower set in Atlanta series is equipped with various modes including Air-Injection rainshower, hand shower and spout. Simply a click would start immediately a favourite shower mode. The design of swivel spout effectively saves space while offering shower comfort.



FCP 3107

Atlanta thermostatic bath/shower mixer with Pro-Click-3 buttons

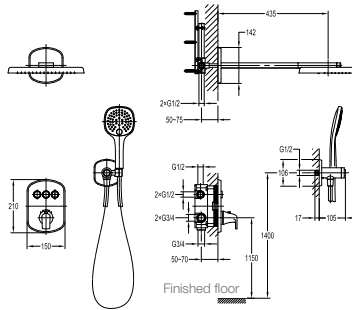
- thermostatic cartridge, anti-scald 38°C safety stop
- Air-Injection shower technology
- brass shower head, Ø30cm
- ABS handshower, 3-mode
- PVC flexible hose, revolflex 360°, 150cm, 1/2"
- swivel bath spout
- brass
- chrome



FCP 3128

Atlanta thermostatic concealed shower mixer with Pro-Click-4 buttons

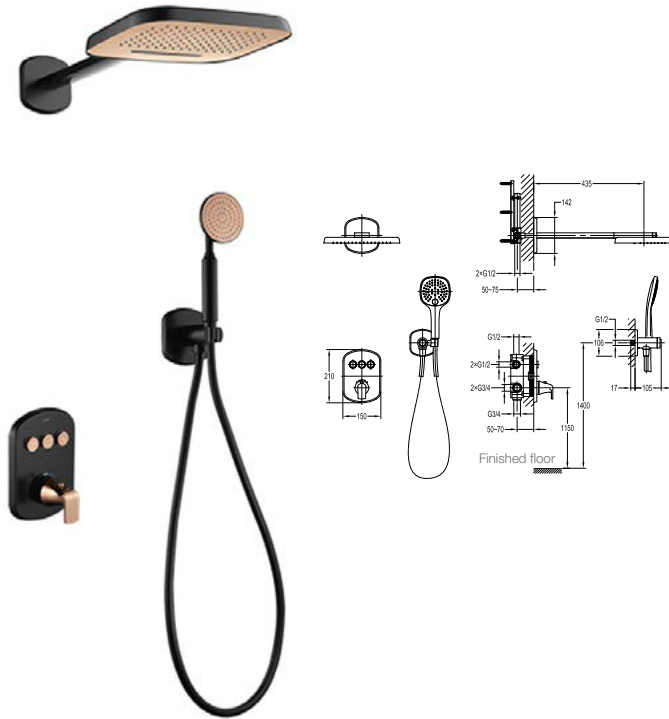
- thermostatic cartridge, anti-scald 38°C safety stop
- 3-mode brass rainshower with waterfall and rain stream
- 2 inlets 3/4", 3 outlets 1/2", 1 outlet 3/4"
- brass shower head
- ABS handshower, 3-mode
- PVC flexible hose, revolflex 360°, 150cm, 1/2"
- brass
- chrome



FCP 3128MB

Atlanta thermostatic concealed shower mixer with Pro-Click-4 buttons

- thermostatic cartridge, anti-scald 38°C safety stop
- 3-mode brass rainshower with waterfall and rain stream
- 2 inlets 3/4", 3 outlets 1/2", 1 outlet 3/4"
- brass shower head
- 1-function pressurized brass handshower
- PVC flexible hose, revolflex 360°, 150cm, 1/2"
- brass
- matte black



FCP 3128MBE

Atlanta thermostatic concealed shower mixer with Pro-Click-4 buttons

- thermostatic cartridge, anti-scald 38°C safety stop
- 3-mode brass rainshower with waterfall and rain stream
- 2 inlets 3/4", 3 outlets 1/2", 1 outlet 3/4"
- brass shower head
- 1-function pressurized brass handshower
- PVC flexible hose, revolflex 360°, 150cm, 1/2"
- brass
- matte black + everose gold



